



PROPER METHOD TO ADDRESS YOUR BUILDING

All building addresses shall be located in the top corner of the building and visible from the road in a contrasting color.

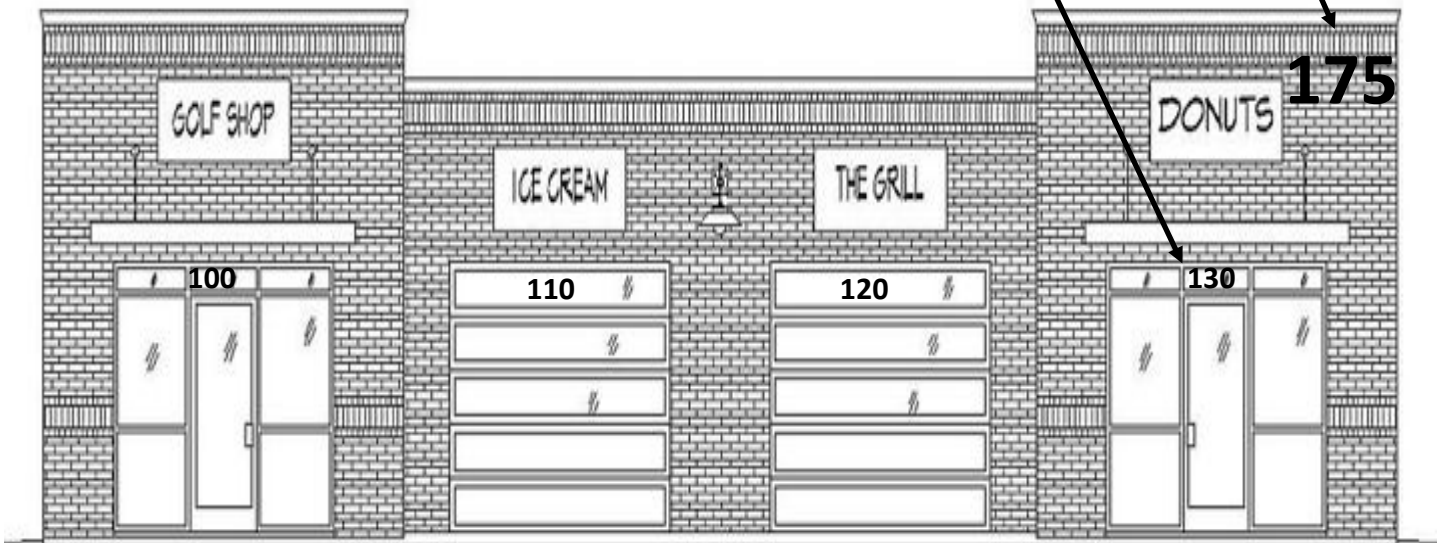
Each character shall be a minimum of **12" inches** high with a minimum stroke width of 1/2 inch.

175 ↑ 12"

Suite numbers- each character shall be a minimum of **4" inches** high with a minimum stroke width of 1/2 inch and shall be located above or on your suite door.

130 ↑ 4"

If you're in a shopping center and your lease space has an individual address each character shall be a minimum of **6" inches** high with a minimum stroke width of 1/2 inch and shall be located above or on your suite door



If you have any questions or concerns please contact the City of Paris Building Inspection Department at 903-784-9234